

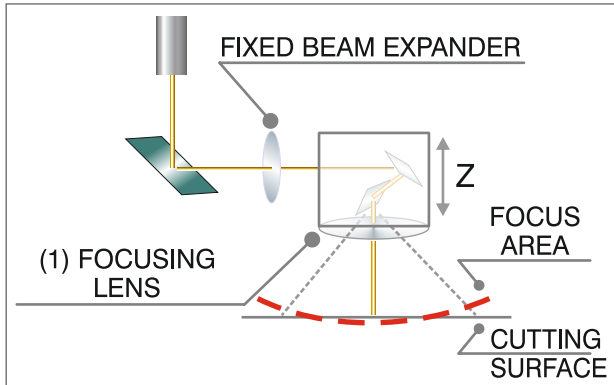
GMI *Laser*

Systems

GMI Laser III Easy

LASER BRIDGE FOR EMBROIDERY MACHINES 2 AXIS HEAD (X AND Y) - 300 x 300 MM FIELD

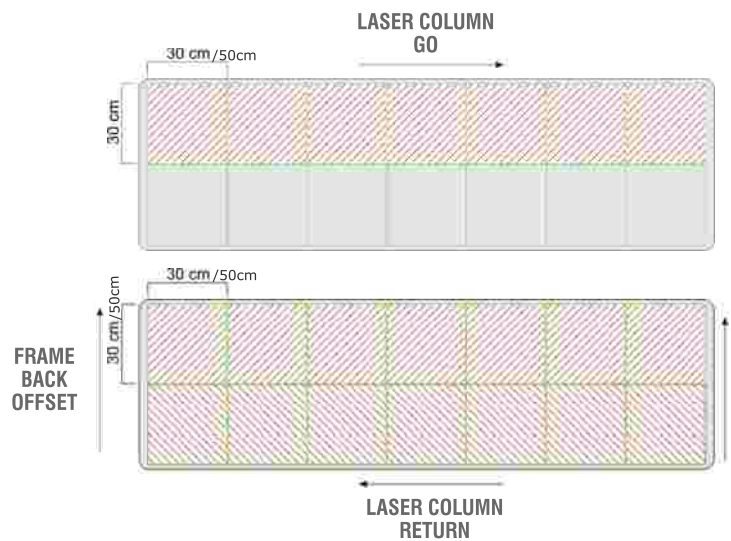
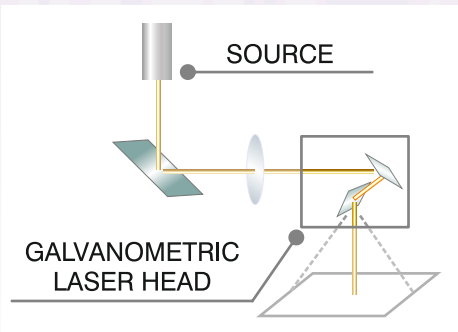
- The 3rd axis (Z) is mechanical (software driven): the head raises and lowers according to fabric thickness parameter
- To focus the cutting surface a focusing lens is used (1).



- Max. cutting area 300 x 300 mm.
- Thanks to the combination of laser column displacement along the X axis and frame along Y axis, you can cut designs larger than 300 x 300 mm. The software, in fact, automatically divides and optimizes the design in smaller cutting areas and drives both the laser column and the frame. First the laser column moves and cut forward, then the frame back offsets, finally the column cuts while returning to its origin.

GALVANOMETRIC LASER HEAD

The head is equipped of special mirrors moved by electromagnetic motors that picolot the laser beam extremely fast and precisely (it possible to obtain better results in comparison to traditional cutting devices that use laser heads moved by belts and x - y motors).

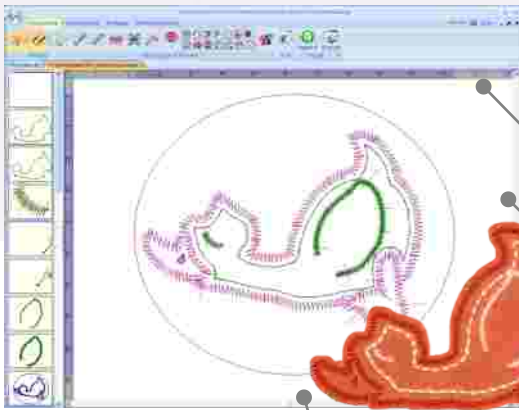


Stilista 3

STILISTA 3 LASER DRIVER

Laser bridge driving software, 100% made by GMI.

Complete control of the machine to get the maximum performance.



User friendly interface and complete control of the cutting / engraving parameters (power, cut speed, cut delay, repeat delay (to cool the fabric), fabric thickness, out of focus position)

Automatic conversion from vector images to laser cut and laser engraving

Convert embroidery designs to laser cut and laser engraving

Special stitches engraving effects *

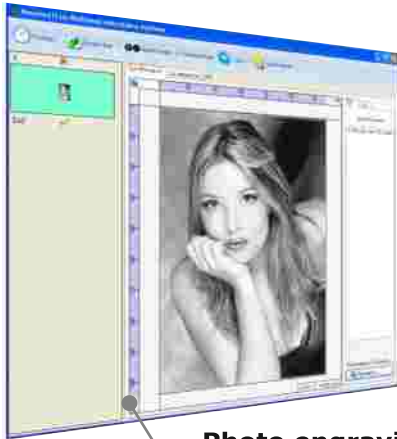


Photo engraving (raster)*
Engrave a picture or part of an image included in a shape



True Type fonts



Engraving and laser cut effects



OTHER MAIN FEATURES

- [-] ACCURATE **TOOLS FOR MANUAL DIGITIZING** OF LASER OUTLINES WITH SPLINES
- [-] BORDERS ENLARGEMENT (Offset)
- [-] **DEFAULT PARAMETERS:** stock of pre-set and customized parameters to suit the type of processing
- [-] AUTOMATIC CONTROL OF LASER OUTLINES
- [-] **CONTROL THE SUPERPOSITION** IN THE PEAK CORNERS
- [-] **SET THE CUT POSITION** and possibility to adjust it on every single head or to apply the same adjustment to all the heads
- [-] **AUTOMATIC DIVISION OF LASER CUT DESIGNS** that are larger than the cutting area
- [-] **DELAY SMOKE SUCTION END** (to delay the displacement of the laser column to the next head, in order to completely suck the smoke produced during the cut of the material)
- [-] POSSIBILITY TO **SET DIFFERENT PARKING POSITIONS** OF THE LASER UNIT

- [-] **PERFORATION** with special control of laser shot
- [-] IMPORT **VECTOR IMAGES** AND AUTOMATICALLY CONVERT THEM TO LASER CUT (ie. From Corel draw, SWG files with colors) *
- [-] POSSIBILITY TO CONVERT PARTS OF OR THE ENTIRE IMPORTED IMAGE and AUTOMATICALLY IDENTIFY THE OUTLINES *
- [-] **OUTLINE TRACING:** automatic recognition of outlines and semi-automatic tracing of outlines of the imported image in order to draw laser outlines that include parts of different objects and possibility to manually draw additional objects*
- [-] Possibility to add the software STILISTA 3 STRASS to make rhinestone cards templates, designs with holes and other effects.
- [-] **HI-QUALITY CUT:** special system to get neat cut on hard materials*
- **NO WELDING CUT**, to cut synthetic materials that weld after normal cut*
- **AUTOMATIC WEFT COMPENSATION:** automatic power modulation according to the warp and weft of the fabric*

* Available in the Stilista 3 Laser driver PLUS version only

GENERAL FEATURURES

VERSATILITY

□ Can be installed on any embroidery machine and the bridge bars configuration can be modified any time.

QUALITY AND RELIABILITY

□ LASER SOURCE: sated Co_2 , nominal power 100w
2-AXIS GALVO HEAD, cutting area 300x300 mm
LIQUID REFRIGERATION, for stabel performances when the room temperatur eis high and when the laser works 24/24h.

ROBUSTNESS

□ STEEL BARS THICK SECTION 300X300MM.
The bars do not bend, do not vibrate and do not require bulky C-shape supports; thus, any embroidery, even the deepest ones, can be placed under the bridge. No need to replace the supports in case of machines change.

ACCURACY

MOTORI BRUSHLESS, move the laser column with high acceleration, speed and prompt stop.

SAFETY

□ The machine is equipped devices for the utmost operator's safety.

OPTIONS

Device for tubular frames



Supports for sequin device



Unwinding/ winding machine 3.2 mt

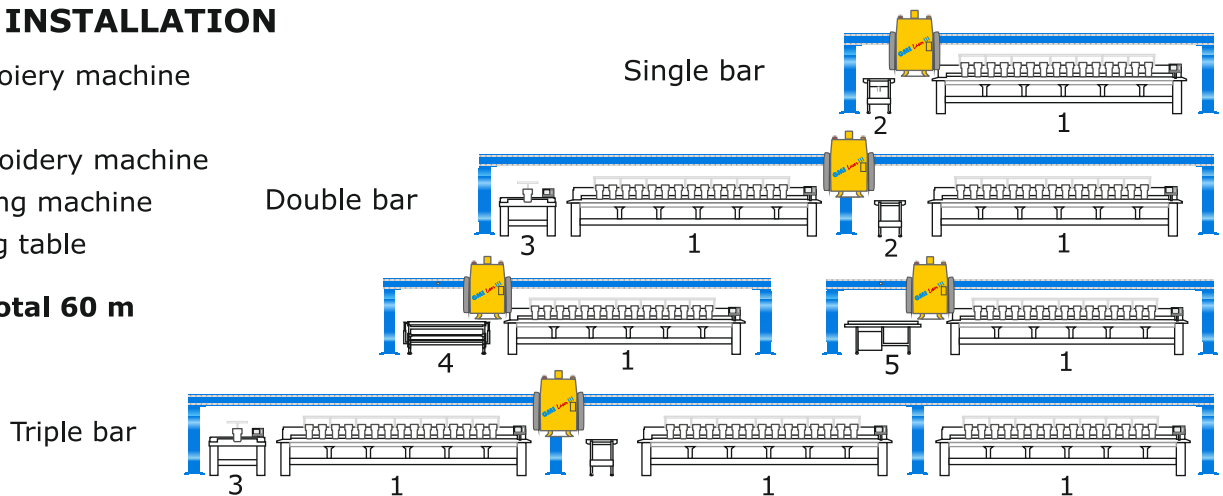
Cutting table with smoke suction 600x600 mm and 2500x600 mm

Automatic cutting table with smoke suction and automatic movement 2500x1000 mm

EXAMPLES OF INSTALLATION

- 1 Multihead embroioery machine
- 2 Test table
- 3 Singlehead embroidery machine
- 4 Unwinding/winding machine
- 5 Automatic cutting table

Up to five bars, total 60 m



Ability to set up multiple parking laser columnn points

GMI Agent

GMI srl

Registered office: Via M. D'Azeglio, 28
Business premises: Via Meucci, 36
31029 Vittorio Veneto (TV) - ITALY-



+39 0438 556299 - Fax +39 0438 556899 -



info@gmi.it -



www.gmi.it