



# Stilista

## 2000

dedicato a chi ricama

by **GMI**

Full 32/64 BIT Software WINDOWS XP

**GMI** presents

**Stilista  
2000**

In **1980** we started to develop digitizing programs for embroidery creation.

In **1986** we presented the first system in the world featuring on-line digitizing and editing.

At the **1989 Atlanta Bobbin Show** we presented a digitizing program called **3000 Scanner**, which was the first in the world to use scanners for the direct digitizing of embroidery designs. We also invented the "special stitches" and used them to create an embroidery called Sunshine which later won the "stitch-off" **grand prize in Stitches Contest**.

We are aware that we have already introduced quite a few important innovations in embroidery digitizing; nevertheless we are determined to keep on striving to maintain the leadership in this field.

THE RESULT OF OUR EFFORTS CAN BE SEEN IN *Stilista 2000*, WHICH **GMI** IS NOW PROUD TO PRESENT.

## THE APPROACH

We have introduced a new approach to the process of digitizing: a complete set of modern drawing tools is at the user's disposal so that he can easily create very accurate designs. You can work either on scanned images or on vectorial images exported from the most common graphics programs.

There is also, of course, the possibility of choosing the traditional way of drawing and digitizing on a digitizer board.

## EASY WITH SMILEY

To ease our users' work, we have inserted an on-line manual. Function parameters are easily understandable and clearly visualized. With the help of the smiley face you know at any time whether the parameters you are using are correct.

There is also some information available on fill density, suggested stitch type, etc..

The program automatically saves the design you are working on at any modification so that you don't run the risk of losing your work.

## FOR THOSE WHO HAVE A BENT FOR TECHNOLOGY

*Stilista 2000* can manage up to 30,000 meters wide designs; embroidery coordinates are stored in microns (the thousandth part of a millimeter). If you aren't sure the program can support all your needs, consider that you can produce designs containing as many stitches as you like (we mean some millions). Besides, you can insert up to 64,000 orientation lines in one single fill area, to make the stitches go exactly where you want them to.

## FOR CREATIVE PEOPLE

If you, on the other hand, have a creative mind and your fantasy comes before technology, we remind you that in 1990 GMI invented the 'color special stitches', and that the expansion special stitches are still a GMI exclusive.

*Stilista 2000* comes with 380 special line patterns, 380 background fill patterns and 100 expansion special stitches.



You can easily modify these special stitches: put them in curve, set the size, apply them in more colors, etc.. If 380 special stitches are not enough to satisfy your creative needs, don't worry: you can create brand-new ones, as many as you need.

## PERSONALIZATION BY AUTOMATIC PARAMETERS

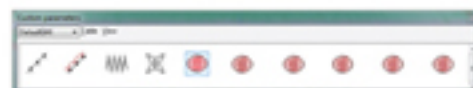
If you happen to need the exact density, stitch length etc. for a filled area or for small lettering, you will find these parameters already set and ready to use. You can choose them automatically according to the type of material you are working on, the type of the stitching or the lettering size.

If you are not completely satisfied with the program, cheer up: *Stilista 2000* not only enables you to create your own special stitches and your own fills but you can also save your own personalized parameters.

## ADVANCED DIGITIZING

Why do we describe working with *Stilista 2000* as "advanced digitizing"?

- Because you can create your embroidery by means of the graphic tools used in the most common vectorial graphics programs.
- Because the program automatically recognizes the objects in vectorial images.
- Because the program automatically recognizes the contours of the areas to be filled even when the image has not uniform colour. Moreover, you can easily recognize the contours of a photographic image having many shades.
- Because the program uses shortened stitches to go around curves in filled areas. The density on both sides of the curve is even. The program can adjust the shortening rate and can even hide the stitches.
- Because the program uses up to 10 different types of underlay stitches and up to 20 combinations of them. Three of them are expansion underlay stitches, which means that they start from the center of the area and make their way to the border. This means that you can attach the most difficult materials, such as wool, lycra, sponge, etc., to the backing without wrinkling them.
- Because fill density can be automatically varied when the stitches become too short or when you want to obtain a shading effect (1).
- Because also the quality of "standard" fills has been improved in *Stilista 2000*. Several effects can be applied to each fill area: jagged and E-stitch (3); needle penetration lines to obtain the effect of leaf veins (4); border-to-border subdivision into any number of stitches (2); bundle effect (5).
- Because in this version of the program we have created new types of fills: 380 background satin fills with multiple orientation lines (6); fills in which stitch orientation follows a curve (7); linear fills (8); combined fills (9); concentric fills, also with special stitches, suitable for Cornely machines (10); fills with multiple effects (11); 'special line pattern' fills with more than one orientation lines and hidden areas (12); 'special line pattern' fills with different orientations (13); expansion 'special stitch' fills



(7)



(10)

## LETTERING

Through the built-in lettering system you can insert lettering in your design. Lettering in *Stilista 2000* is easy to use and can be manipulated just like any other object, as if you had punched them yourself.

It is also possible to modify any lettering character, apply 3D effects, change any fill of a character, and even create new fonts. The program can therefore manage fonts of any dimension.



È facile creare parole con lettere di 4mm  
It is easy to create lettering 4mm high

## LASER CUTTING TOOL

*Stilista 2000* can drive the GMI laser-cutting tool that can be attached to any existing embroidery machine, other types of embroidery laser machines and laser plotters. Through this tool, it's also easy to have the fabric cut at any distance from the embroidery border.

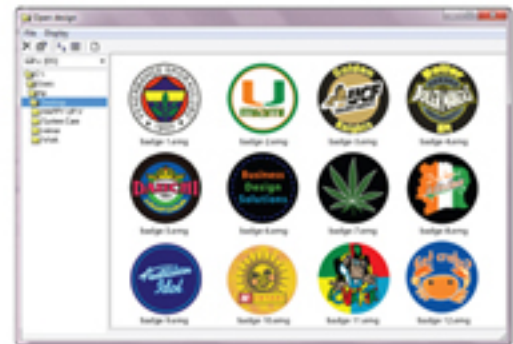


## EMBROIDERY ARCHIVE

By using the data base system of *Stilista 2000* you can save your designs on the hard disk and later retrieve them through icons or customized search criteria (embroidery type, client name, collection type, date of production, etc.).

## CLIP ART

We have inserted some tutorial designs together with the images used to digitize them. Since these designs have optimum fill and running stitch parameters you can use them as a reference. You can also freely insert them in your own design.



## TRUE VIEW

Besides showing the exact thread dimension, the simulation of the finished embroidery in *Stilista 2000* visualizes and prints sequins (paillettes) in their different shapes and colors. The function is available at any stage of the embroidery creation.



## UTILITIES

*Stilista 2000* is supplied with a utility program which allows you to directly interface embroidery machines, create punched tapes, write disks in any machine format and print detailed embroidery worksheets reporting operative sequences, thread consumption values, etc..

**Different versions for different needs.** With a view to satisfying every user's needs, we have released different versions of the program, each with a different price (ten levels and several options are available). In this way we are sure we can meet any requirement.

**Technical assistance agreement.** Thanks to the technical assistance agreement we propose, our customers are guaranteed:

- Steady updating of the program to its latest revision.
- Prompt technical support on embroidery techniques, PC use, computer graphics, Internet, etc..

IF WE HAVE BEEN ABLE TO SUCCESSFULLY ATTAIN ALL OUR GOALS WE HAVE TO THANK OUR CUSTOMERS, WHO GAVE US VALID SUGGESTIONS, AND OUR TECHNICAL STAFF, WHOSE ABILITY HAS TURNED EVEN THE MOST DIFFICULT UNDERTAKINGS INTO ACHIEVEMENTS.

with empty and hidden areas (15) and with multiple aligned colors (16,17); standard fills with empty and hidden areas and multiple orientation lines.

- Because we have implemented CONTOUR CLONING, which enables you to modify and recalculate several objects in a single action. For example, in an appliqué you can change the edging stitches and the running stitch at the same time.

- Because among the various types of fill in *Stilista 2000*, you will find PHOTO STITCH fill, which lets you obtain a photographic effect either in one fill or in the entire embroidery.

- Because the quality of the finished embroidery is perfect at all *Stilista 2000* levels.

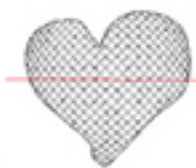


### 3D SPECIAL EFFECTS

You can apply 3D special effects to all objects, blocks, or the whole design, modifying either the individual stitches or the source drawing in the last case the stitches can be completely recalculated to fill the drawing. After transforming an object you can add a cutout line to shape the filled area (17).

3D effects like wave (18), slant, sphere, perspective, etc. can also be applied to lettering.

By using "INSERT STITCH BOUNDARY" tool, you can apply a three-dimensional effect to any contour.



### RUNNING STITCHES

The drawing tools we have developed make it easy to create a design with complex running stitches. There is no need to worry about the digitizing sequence.

You will also be able to repeat and branch any running stitch perfectly over the existing outline.



### EDITING

You can modify the design outlines and parameters whenever you want: move, enlarge, reduce, cut, copy, and paste any object, block, or the whole design. The stitch recalculation is always perfect even when you enlarge the design by 200% or reduce in by 90%

- **Object-oriented editing.** By a simple DRAG-AND-DROP action you can copy the parameters of an object to another object or change its sequential position.

- **Source lines.** Vectorial source lines in you design can use up to 5 different types of nodes. You can insert source lines in nine different ways, which can be completely automatic, semi-automatic or manual. The manual insertion of an outline can use eight different tools. Of course, you can use a combination of them all.





**OTHER PRODUCTS**

LASER KIT FOR EMBROIDERY MACHINES

PLOTTER LASER GO

EMBROIDERY ARCHIVE

PRINT CATALOGUE

LETTERING PROGRAMS

EDITING SYSTEMS

STOCK CD

CONNECTIONS TO EMBROIDERY MACHINES

EMBROIDERED CATALOGUE



**RAND ASIA SDN. BHD.**

33, Jalan Nirwana-1, Taman Nirwana, 68000 Ampang, Selangor D.E., Malaysia.

Tel : +603-9281 6328, 9281 2618 Fax : +603-9281 3623

Email : randasi@po.jaring.my Web : www.randasia.com.my

**GMI** srl

via Massimo D'Azeglio 28

31029 Vittotio Veneto TV Italy

tel: ++39 0438 556299 fax: ++39 0438 556899

e-mail: info@gmi.it www.gmi.it